

11

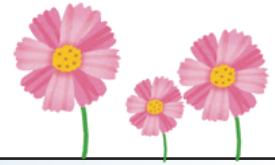
November

2024

Honseiji Temple Activities Calendar

44-668 Kaneohe Bay Dr, Kaneohe, HI, 96744

☎ 808-235-8486 🌐 www.honseiji.org ✉ info@honseiji.org



2024 Course of Action:

“Year of Further Progress in Shakubuku”

2024 Action Guides for Nichiren Shoshu Believers Overseas

1. Promote activities through Gongyo and Shodai
2. Unite to Put Shakubuku into Practice
3. Participate in Tozans and Daily Activities to Help People Develop

SUN	MON	TUES	WED	THURS	FRI	SAT
<p>Let's go to the temple together!</p>					<p>Okyobi Day 御経日 1</p> <p>Morning Gongyo 6:45am</p> <p>Online Evening Gongyo 2:45pm</p>	<p>2</p> <p>Online Morning Gongyo 8:45am</p> <p>Online Discussion Meeting 10am</p>
<p>3</p> <p>Morning Gongyo 8:45am</p> <p>Kosen-rufu Shodai 10am <i>(Communicators meeting)</i></p> <p>Evening gongyo 2:45pm</p>	<p>4</p> <p>Morning Gongyo 6:45am</p> <p>Shodai 9am</p> <p>Shodai 4pm</p> <p>Evening gongyo 4:45pm</p>	<p>5</p> <p>Morning Gongyo 6:45am</p> <p>Shodai 9am</p> <p>Shodai 4pm</p> <p>Evening Gongyo 4:45pm</p> <p>Study Meeting 6:20pm (ENG)</p>	<p>6</p> <p>Morning Gongyo 6:45am</p> <p>Shodai 9am</p> <p>Shodai 4pm</p> <p>Evening gongyo 4:45pm</p>	<p>7</p> <p>Morning Gongyo 6:45am</p> <p>Shodai 9am</p> <p>Shodai 4pm</p> <p>Evening Gongyo 4:45pm</p> <p>Study Meeting 6:20pm (JPN)</p>	<p>8</p> <p>Morning Gongyo 6:45am</p> <p>Shodai 9am</p> <p>Shodai 6pm</p> <p>Friday gongyo 6:45pm</p>	<p>9</p> <p>Shodai 8am</p> <p>Morning Gongyo 8:45am</p> <p>Temple Cleaning 9:30am</p> <p>Home Visitation</p> <p>Online Evening gongyo 4:45pm</p>
<p>10</p> <p>Shodai 8am</p> <p>Morning Gongyo 8:45am</p> <p>Oku Ceremony 10am</p> <p>Keiki Meeting</p> <p>Evening gongyo 2:45pm</p>	<p>11</p> <p>Shodai 8:00am</p> <p>Morning Gongyo 8:45am</p> <p>Evening gongyo 2:45pm</p> <p><i>Public Holiday</i></p>	<p>12</p> <p>Morning Gongyo 6:45am</p> <p>Shodai 9am</p> <p>Shodai 4pm</p> <p>Evening Gongyo 4:45pm</p> <p>Study Meeting 6:20pm (ENG)</p>	<p>13</p> <p>Morning Gongyo 6:45am</p> <p>Shodai 9am</p> <p>Shodai 4pm</p> <p>Evening gongyo 4:45pm</p>	<p>14</p> <p>Morning Gongyo 6:45am</p> <p>Shodai 9am</p> <p>Shodai 4pm</p> <p>Evening Gongyo 4:45pm</p> <p>Study Meeting 6:20pm (JPN)</p>	<p>15</p> <p>Morning Gongyo 6:45am</p> <p>Shodai 9am</p> <p>Shodai 6pm</p> <p>Friday gongyo 6:45pm</p>	<p>16</p> <p>Shodai 8am</p> <p>Morning Gongyo 8:45am</p>
<p>17</p> <p>Shodai 8am</p> <p>Morning Gongyo 8:45am</p> <p>Mokushi-e Ceremony 10am</p> <p>Discussion Meeting</p> <p>Evening gongyo 2:45pm</p>	<p>18</p> <p>Morning Gongyo 6:45am</p> <p>Shodai 9am</p> <p>Shodai 4pm</p> <p>Evening gongyo 4:45pm</p>	<p>19</p> <p>Morning Gongyo 6:45am</p> <p>Shodai 9am</p> <p>Shodai 4pm</p> <p>Evening Gongyo 4:45pm</p> <p>Study Meeting 6:20pm (ENG)</p>	<p>20</p> <p>Morning Gongyo 6:45am</p> <p>Shodai 9am</p> <p>Shodai 4pm</p> <p>Evening gongyo 4:45pm</p>	<p>21</p> <p>Morning Gongyo 6:45am</p> <p>Shodai 9am</p> <p>Shodai 4pm</p> <p>Evening Gongyo 4:45pm</p> <p>Study Meeting 6:20pm (JPN)</p>	<p>22</p> <p>Morning Gongyo 6:45am</p> <p>Shodai 9am</p> <p>Shodai 6pm</p> <p>Friday gongyo 6:45pm</p>	<p>23</p> <p>Shodai 8am</p> <p>Morning Gongyo 8:45am</p> <p>Home Visitation</p> <p>Online Evening gongyo 4:45pm</p>
<p>24</p> <p>Shodai 8am</p> <p>Morning Gongyo 8:45am</p> <p>Temple Cleaning 9:30am</p> <p>Evening gongyo 2:45pm</p>	<p>25</p> <p>Morning Gongyo 6:45am</p> <p>Shodai 9am</p> <p>Shodai 4pm</p> <p>Evening gongyo 4:45pm</p>	<p>26</p> <p>Morning Gongyo 6:45am</p> <p>Shodai 9am</p> <p>Shodai 4pm</p> <p>Evening Gongyo 4:45pm</p> <p>Study Meeting 6:20pm (ENG)</p>	<p>27</p> <p>Morning Gongyo 6:45am</p> <p>Shodai 9am</p> <p>Shodai 4pm</p> <p>Evening gongyo 4:45pm</p>	<p>28</p> <p>Shodai 8:00am</p> <p>Morning Gongyo 8:45am</p> <p>Evening gongyo 2:45pm</p> <p><i>Public Holiday</i></p>	<p>29</p> <p>Morning Gongyo 6:45am</p> <p>Shodai 9am</p> <p>Shodai 6pm</p> <p>Friday gongyo 6:45pm</p>	<p>30</p> <p>Shodai 8am</p> <p>Morning Gongyo 8:45am</p> <p>Home Visitation</p> <p>Online Evening gongyo 4:45pm</p>

Reciting Practice - Every Mon - Fri 7:30am
Taiko Drum Practice - Every Fri 6:00pm
 Every Sunday 2:15pm



HONSEIJI TEMPLE IS NOW ON LINE APP!

Scan this QR Code for more information!

